



ANIPLA - Associação Nacional da Indústria  
para a Protecção das Plantas

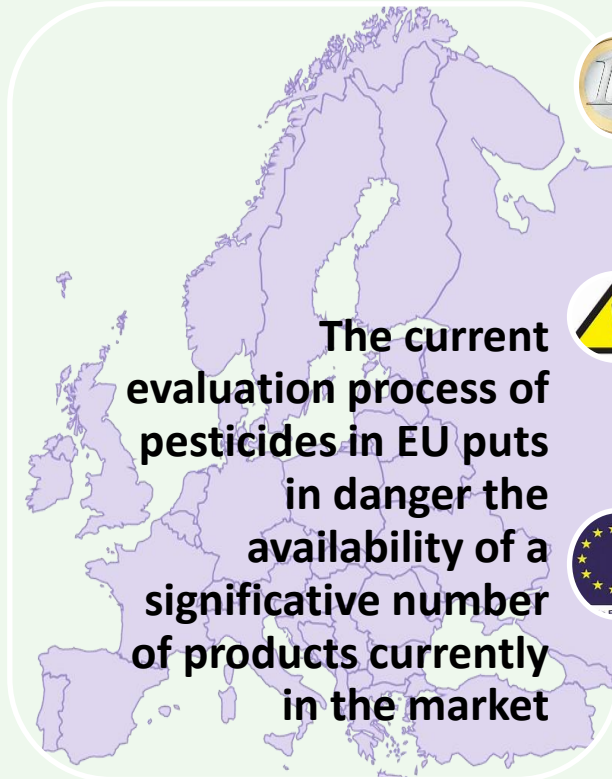
[www.anipla.com](http://www.anipla.com)  
Para quem pensa a agricultura.

## Economic impact assessment

caused by the withdraw of active ingredients as a result of the  
UE Reg. 1107/2009 implementation, on key value chains of  
the Portuguese farming pattern



# Objectives of this study



Assess the economic impact of this treat

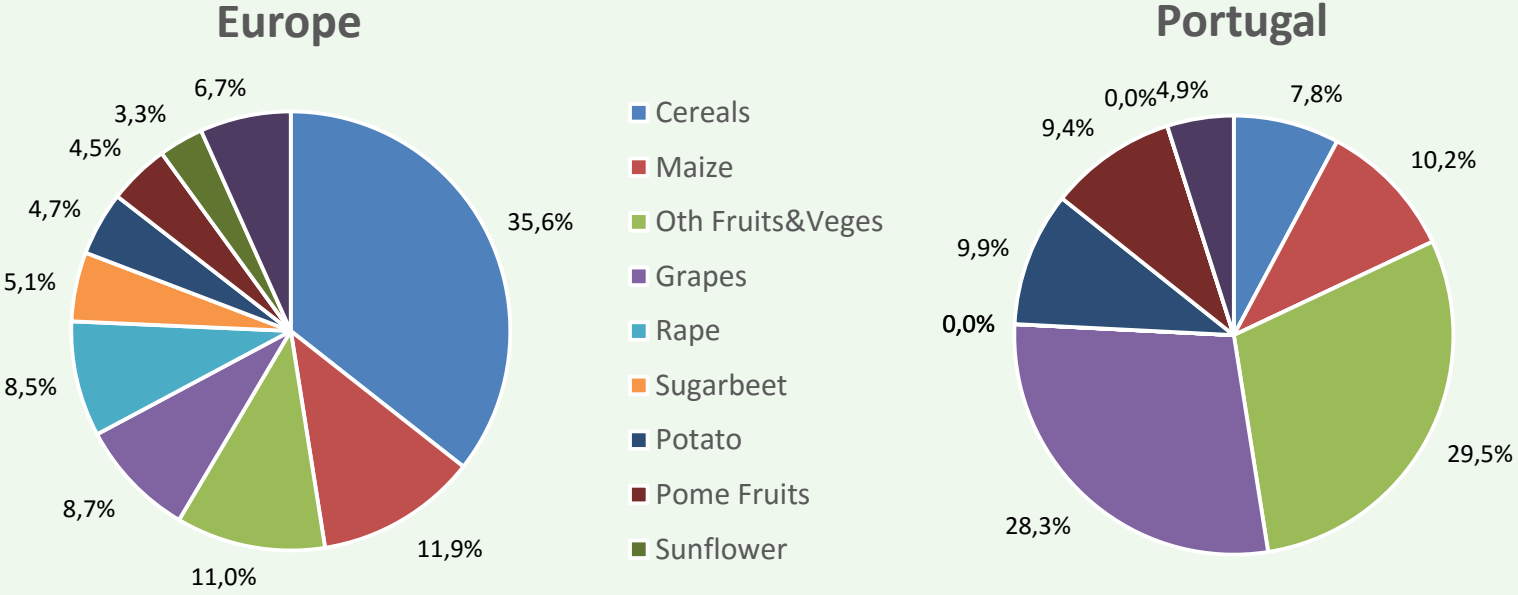


Call the attention and get involvement of “stakeholders”



Lobby decision makers

# CP Market: Portugal vs EU

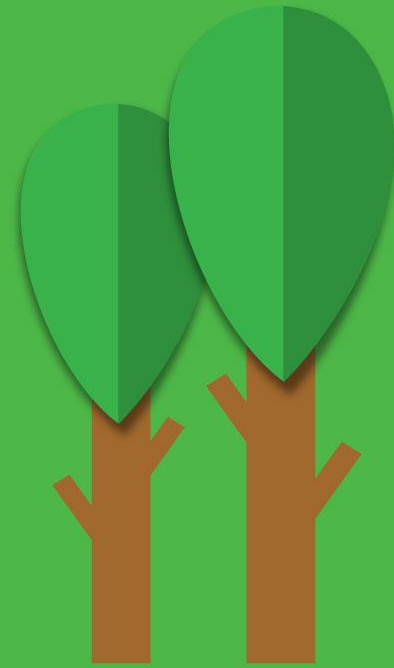


In such registration environment to a country like Portugal is even more difficult to justify the companies investment to develop and register new CP solutions in key crops to the country



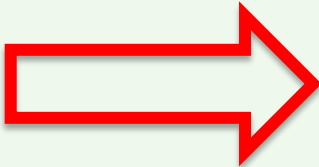
Para quem pensa a agricultura.

## Methodology



# Measure de loss

**MORE PROBLEMS**



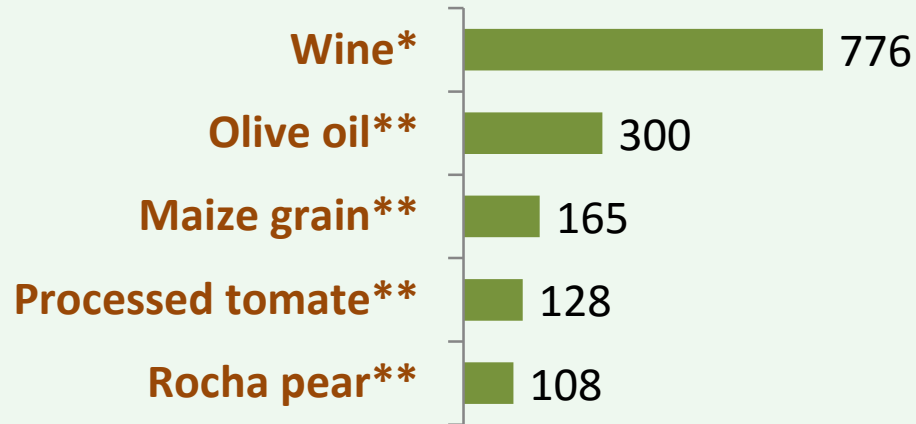
**LESS PRODUCTION**



# The process



## Gross income at farmer level 2015 (M€)



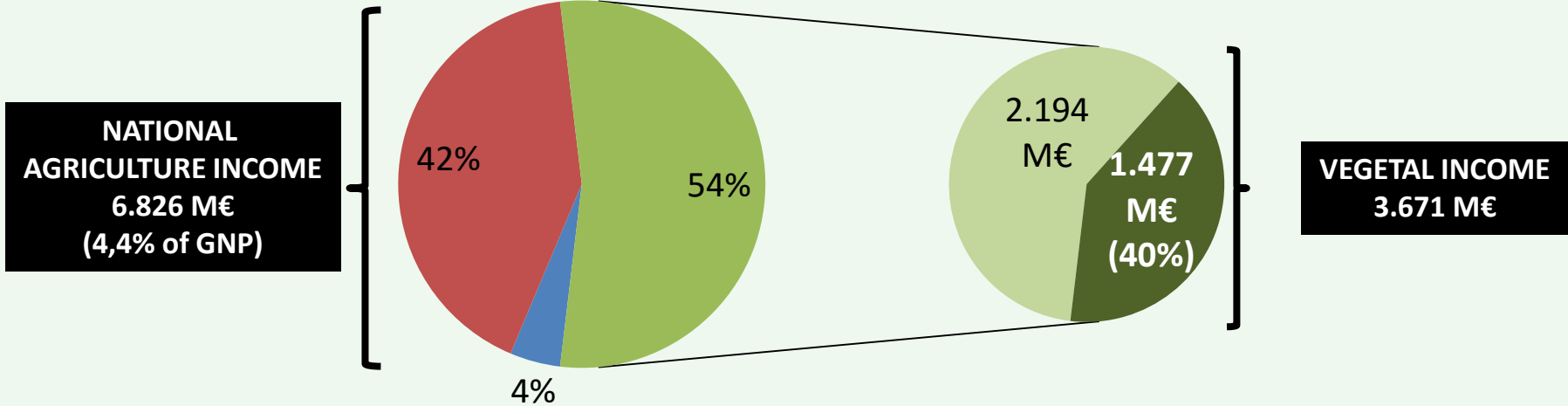
\* Source: INE. Net prices. Latest estimate

\*\* Source: Participants. Net prices to farmer

# How important are them

## Gross income at farmer level - 2015\*

■ Other ■ Animal ■ Vegetal ■ Assessed crops



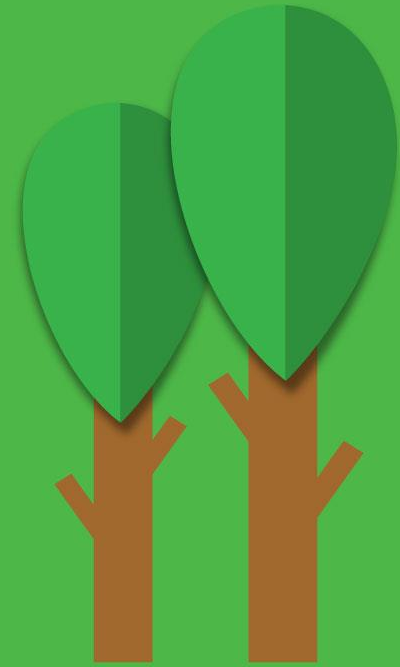
\* Source: INE. Net prices





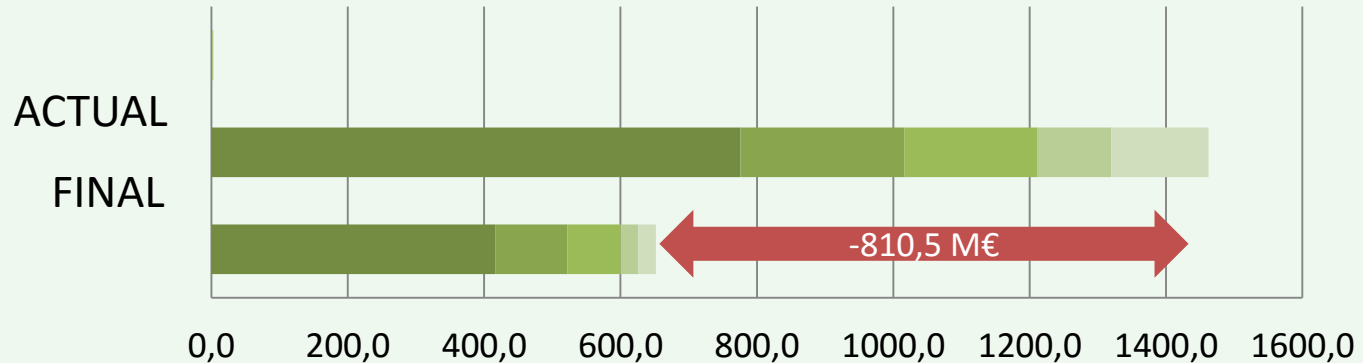
Para quem pensa a agricultura.

## Results



# Consolidated results

## CUMULATIVE ECONOMIC IMPACT ON THE CROPS / VALUE CHAINS UNDER ANALISYS



	Final income	Current income	Loss (%)
■ Grapes / Wine	416,9	776,0	46%
■ Olives / Oil	105,2	240,0	56%
■ Maize / Grain	78,4	196,0	60%
■ Pear / Rocha	25,4	108,0	76%
■ Processed tomato	26,1	142,5	82%

# Import / Export

	<b>EXPORT</b> 1.511 M EURO	<b>COMERCIAL BALANCE</b> +1.051 M EURO
	725 M€	+600 M€
	440 M€	+125 M€
	86 M€	+76 M€
	260 M€	+250 M€

# Conclusions / Recommendations

- The results show a very serious situation;
- All stakeholders have to develop and implement an action plan to defend the sector;
- Innovation and technology must not be barriers but competitiveness accelerators;
- All evaluation and decision making processes must stand in a clear and predictable regulation, science based and NOT based on politics and public opinion makers;
- A balance between risk and benefit must be part of the evaluation process. NOT hazard oriented, but risk oriented, developing risk mitigation measures where needed;
- An active communication with political power is needed, involving decision makers on the correct decisions to defend a sustainable agricultural production from EU citizens to EU and World consumers.



Para quem pensa a agricultura.

Associação Nacional da Indústria  
para a Proteção das Plantas

Rua General Ferreira Martins nº10-6ªA  
1495-137 Algés  
T. +351 214 139 213  
[anipla@anipla.com](mailto:anipla@anipla.com)

[www.anipla.com](http://www.anipla.com)